

4U24Bay dual-socket high-performance server

JWIPC TECHNOLOGY CO., LTD. (Beijing, China)

Tel: 010-82536609

Address: 1821, Zhongguancun Science and Trade Office Building, Haidian District, Beijing

JWIPC TECHNOLOGY CO., LTD. (Shenzhen, China)

Tel: 0755-23981869, 0755-82524465

Fax: 0755-23981819/1919

Address: 13th floor, Block B, Haisong Building, Tairan 9th Road, Futian District, Shenzhen, Guangdong Province

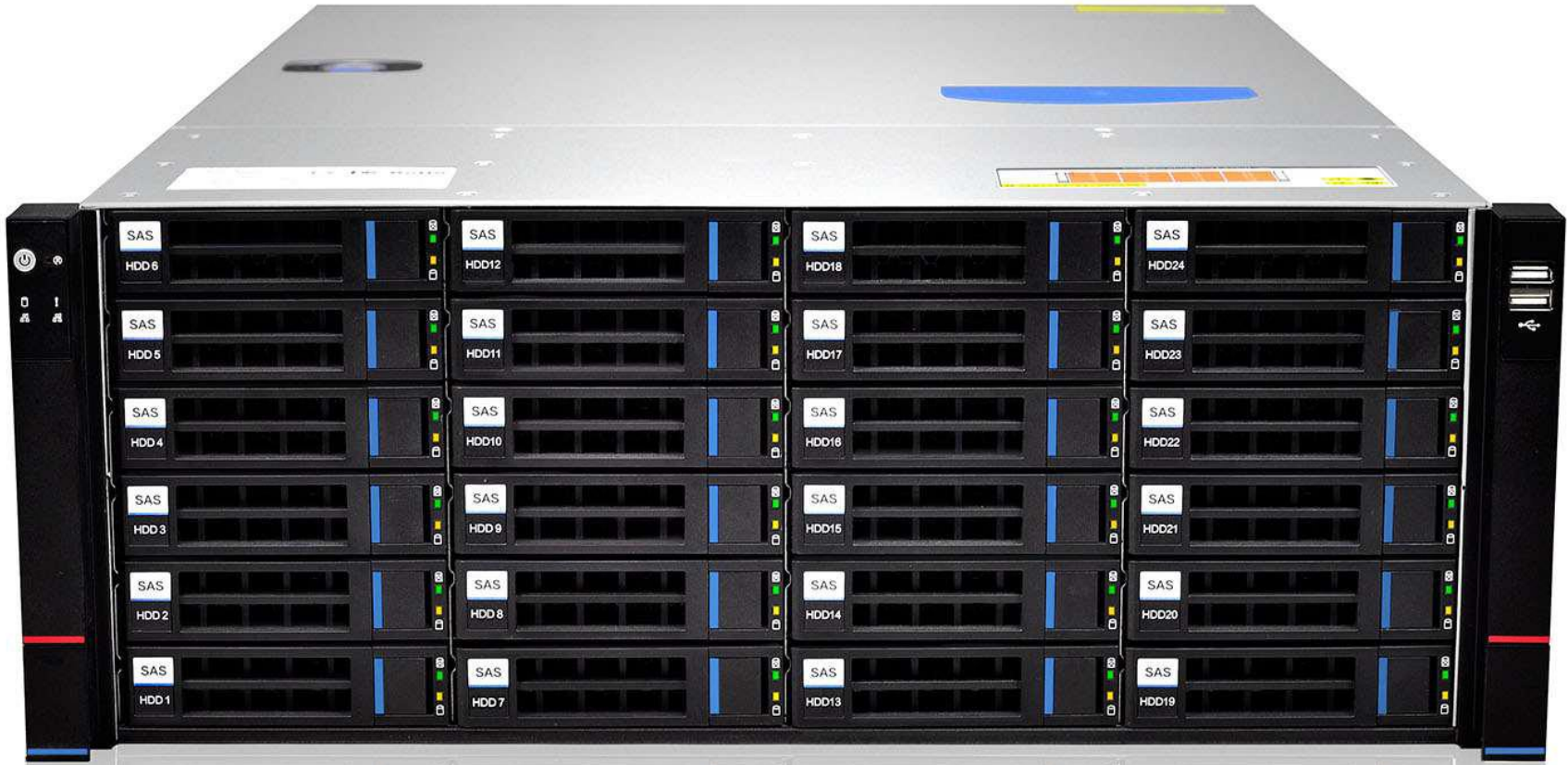
First, product introduction

SYS-8048R-S24 series products are based on Xeon® Scalable series processors of Intel platform and modular design, providing customers with a 4U dual-socket server with high performance, high reliability, low power consumption and optimal heat dissipation. Whether it's an enterprise-level data center or a developing enterprise application, the product can provide a variety of flexible configuration options, which can better meet the growing server demand of customers, provide reliable hardware support for data storage, big data processing, virtualization and other applications, and is the best choice for large-scale industries, enterprises and government users with high requirements for stability and practicality.

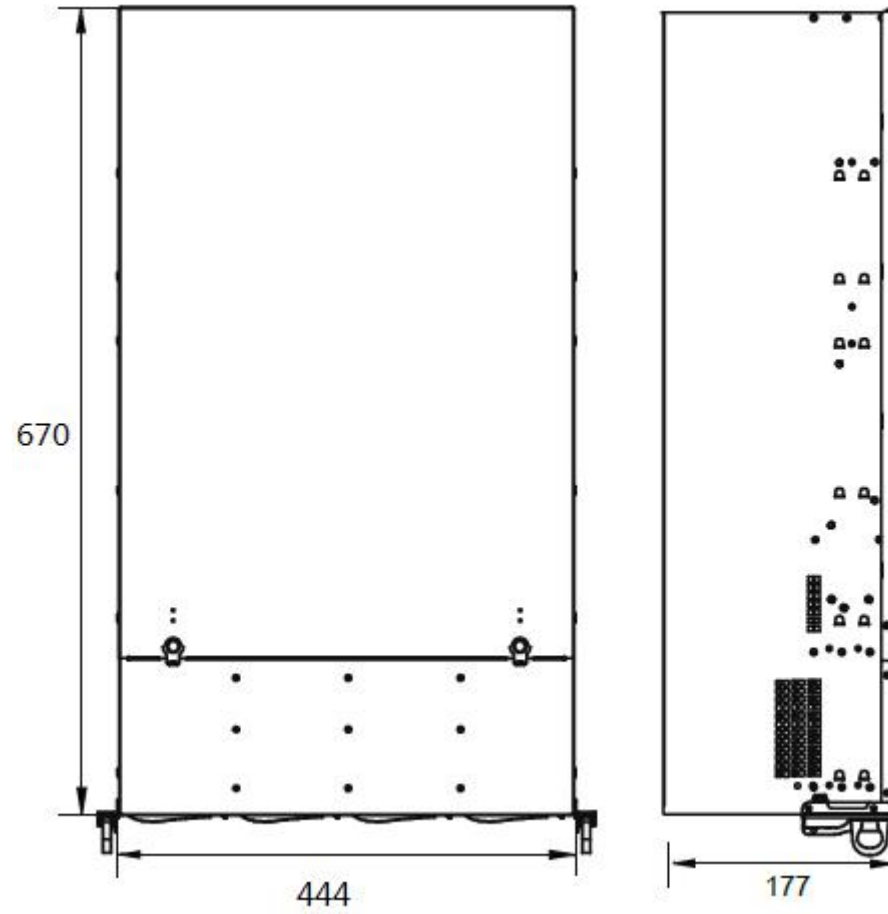
Second, the product characteristics

- Compared with the previous generation, Xeon® Scalable series processors based on Intel platform have 50% more cores and caches, which greatly improves processor performance. In terms of memory, the latest DDR4 memory technology is adopted, which can support a total capacity of 4T at most. Higher density and larger capacity provide better performance for enterprise virtualization and business processing.
- Adopting the latest DDR4 memory technology, it can support a total capacity of 4T at most, and higher density and larger capacity provide better performance for enterprise virtualization and business processing;
- The memory technology that supports Intel Aoteng's persistent memory innovation, which uniquely combines economical large capacity with data persistence support. Enterprise innovation is driven by increased capacity and unique memory mode, which significantly increases the density of virtual machines while reducing the overall TCO, and improves memory security through the security features of automatic hardware integration.
- Support 6 PCI E 3.0 expansion slots, which can realize flexible expansion;
- The storage backplane adopts 12Gb SAS Expander chip, which supports 24 3.5-inch hot-plug hard disks, and the storage type supports 6G SATAIII, SAS type disks, providing a variety of storage solutions for enterprise applications, such as large-capacity hard disk pool, tiered storage, distributed storage and other applications;
- Support 2-port Intel Gigabit network port/2-port Intel 2.5 Gigabit network port and an IPMI management network port, providing various network transmission and communication solutions for enterprise applications;
- Support USB3.0, which can backup data to mobile storage at high speed;
- Redundant fans and redundant power supplies to eliminate a single point of failure;
- Time-sharing power-on mode is adopted for the disk pack, which effectively reduces the power load and the surge impact on the power grid;
- Green, support gold and platinum power supply, reduce TCO expenditure;
- Support hardware monitoring, which can remotely monitor the working state of hardware such as host power supply and fan.

III. Product Appearance (4U24Bay)



IV. Product dimensions



V. Technical specifications and parameters

Order model		SYS-8049R-S24
Product form		4U rack server
Number of processors		2. 2 x Socket P (LGA 3647)
Processor model		1st/2nd generation Intel®Xeon® scalable processor UPI (10.4 GT/s)
chip set		Intel®C621 chipset
internal storage	Memory slots	16 memory slots (4 channels /CPU, 8-DIMM slots /CPU)
	internal storage capacity	Maximum support for 4TB 3DS RDIMM Maximum support is 4TB 3DS LRDIMM. Up to 2TB Intel® Optane™ DC (only supported by 2nd generation scalable processors)
	Memory type	2933/2666/2400/2133MHz ECC DDR4 RDIMM, LRDIMM
	memory size	RDIMM: 16G, 32G, 64GB, 128GB LRDIMM: 64GB, 128GB, 256GB
Front storage	Number of hard disks	24 hot-plug storage slots
	controller	LSI-9361-8I
	Raid	Raid 0, 1, 5, 6, 50, 60
	interface type	SATA3 / SAS
	Hard disk size	2.5" / 3.5"
Post-storage (optional)	Number of hard disks	2
	controller	PCH integration

	interface type	SATA3
	Hard disk size	2.5
M.2 interface	quantity	2
	interface type	PCI-E 3.0 x4
	measure	2280, 2240
DOM	quantity	2
	controller	PCH integration
Gigabit network	controller	Intel i210 Enterprise Gigabit Network Controller
	Number of interfaces	Two gigabit networks, supporting 10/100/1000Mbps
	Interface form	1 double-layer RJ45 interface
2.5 gigabit network	controller	Intel i225 Enterprise Gigabit Network Controller
	Number of interfaces	Two gigabit networks, supporting 10/100/1000Mbps/2500Mbps.
	Interface form	1 double-layer RJ45 interface
IPMI management interface		1 standard RJ45, 10/100/1000Mbps network interface
show	controller	ASPEED AST2500 BMC
	Interface form	VGA
PCIe expansion		3 standard PCIe 3.0 x16(x16 slots) 3 standard PCIe 3.0 x8(x8 slots)

Backplane I/O interface	<p>2 USB 3.0 interface</p> <p>Xusb2.0 interface</p> <p>1 x VGA interface</p> <p>1 com interface</p> <p>1 uid switch (with LED lamp)</p> <p>2 rj-45 gbe LAN interface</p> <p>2 rj-45 2.5 gbe LAN interface</p> <p>1 rj-45 IPMI management interface</p>
Switch /LED	<p>X power switch (with power indicator)</p> <p>1 x Reset</p> <p>1 x power indicator</p> <p>1 power supply/temperature abnormal indicator lamp</p> <p>1 x power indicator</p>
Operating system support	<p>Windows® Server 2016</p> <p>Windows® Server 2012 R2</p> <p>Windows® 10 64-bit</p> <p>RedHat® Enterprise Linux</p> <p>SuSE® Linux Enterprise Server</p> <p>CentOS</p> <p>Ubuntu</p> <p>VMware</p> <p>Citrix XenServer</p>
Power Supply	1+1 redundant power supply 1200W
fan	3 hot-swappable temperature-controlled fans
Size of case	447mm (width) 176mm (height) 750mm (depth)
environmental parameter	<p>Operating temperature: 0° C to 35° C; ; Operating temperature:-40 c to 70 c</p> <p>Working relative humidity: 8% to 90% (without condensation); Non-working relative humidity: 5% to 95% (without condensation)</p>

Installation kit

Support slide rail